

R-F-M

THE MIDLANDS MART

— RUGBYFARMERSMART.COM —

The Charolais Pavilion, Avenue M, Stoneleigh Park,
Kenilworth, Warwickshire CV8 2RG
02476 697731 | www.rugbyfarmersmart.com | 43/139/8013
Office hours: Monday to Friday - 9.00am - 5.00pm
Opening Time: Gates open at 5.30am until further notice

MARKET REPORTS FOR MONDAY 26TH JULY 2021

MARKET AT A GLANCE

Prime Steers to 269p/kg & £1843
Prime Heifers to 255p/kg & £1635
OTM Cattle to 232p/kg & £1627
Prime Lamb SQQ 270p/kg (1896 Avg £115)
Prime Lambs to 318p/kg & £156
Ewes to £179 (440 Avg £119)
Calves to £430 (80)



FRIDAY 30TH JULY 11:30AM FIRST ANNUAL BREEDING SHEEP FAIR

Catalogues & Entry Forms available by post, email or on the website
www.rugbyfarmersmart.com | admin@rugbyfarmersmart.com

CATTLE: 147 FORWARD



A nice yarding and sadly some booked in that didn't make it. Trade quite simply as dear as we have seen with deadweight raising their game and the Wholesalers today going all in. Cows once again on fire and operating at levels previously only seen in the clean system.

Steers;

A good show of Steers with fed quality coming forward throughout and well chased. Top of the Shop a U+ Limousin from G R Fountaine & Son, Buckingham raising to 269p/kg. U- to 246p/kg from G Hutsby & Sons and weighted U- Charolais from PC & RA Nichols 233.5p/kg. Strong well fed R Grades today up in the 230p/kg region with the very thick finished well favoured. In the lump a marvellous £1843 for the Fountaine Family at 685kg ahead of weight at £1705 from PC & RA Nichols and £1613.

Heifers;

Not quite the top runs that we have seen in the past weeks but proper finishing from F Hodgkin saw 255p/kg for U- and 240p/kg with nice finished R Grades to 236.5p/kg from Messrs Hutsby and 234p/kg from GJ & MP Allen. In the lump £1635 from Frank Hodgkin and weight paying for Messrs Hutsby at £1469. Plenty of R Grades sailing past £1400.

OTM;

A U2 Blue from B Dixon saw a 32 month Steer to 232p/kg.

Cows;

Another week to astound with Herefords from DJ Hull & Partners seeing R grade young Cows top at 189p/kg with others from the same 184p/kg and well over 170p/kg. Old aged Cows from the same saw 170p/kg for O+. Top gross £1309 from Messrs Hull. Stock Bulls up in force today seeing a top of 152p/kg for weighted Limousin from W T Hooper returning £1627.

Please let us know what you have for next week with current trade surely enough reason to draw a few before heading to the field work.

Auctioneer: Tom Wrench

STEERS & BULLS

Top prices per Head				FA
Limousin x	685kg	£1843	GR Fountaine & Son	Y
Charolais x	730kg	£1705	PC & RA Nichols	Y
Charolais x	720kg	£1613	PC & RA Nichols	Y
Charolais x	691kg	£1589	PC & RA Nichols	Y
Aberdeen Angus	727kg	£1534	DJ Hull & Partners	Y

Top prices per Kilo				
Limousin x	685kg	269ppk	GR Fountaine & Son	Y
Limousin x	612kg	246ppk	G Hutsby & Sons	Y
Charolais x	730kg	233.5ppk	PC & RA Nichols	Y
Limousin x	632kg	230.5ppk	F A Osborne	Y
	691kg	230ppk	PC & RA Nichols	Y

HEIFERS

Top prices per head				FA
Limousin	641kg	£1635	F Hodgkin	Y
Limousin x	621kg	£1469	G Hutsby & Sons	Y
Limousin x	641kg	£1468	GR Fountaine	Y
Limousin x	603kg	£1447	F Hodgkin	Y
Aberdeen Angus	657kg	£1432	J & I J Tivey	Y
Top prices per kilo				
Limousin x	641kg	255ppk	F Hodgkin	Y
Limousin x	603kg	240ppk	F Hodgkin	Y
Limousin x	621kg	236.5ppk	G Hutsby & Sons	Y
Aberdeen Angus	576kg	234ppk	GJ & MP Allen	Y
Limousin x	610kg	233.5ppk	G Hutsby & Sons	Y

**PLEASE COULD ALL VENDORS BOOK IN STOCK,
EITHER BY A QUICK CALL, TEXT OR EMAIL THANK YOU!**

Office: 02476697731 | Email: admin@rugbyfarmersmart.com | Tom: 07774723758

COWS

COWS				
Top prices per head				FA
Limousin (bull)	1122kg	£1627	W T Hooper	N
British Blue	582kg	£1350	B Dixon	Y
Hereford	818kg	£1309	DJ Hull & Partners	Y
Hereford	735kg	£1294	DJ Hull & Partners	Y
Top prices per kilo				
British Blue	582kg	232ppk	B Dixon	Y
Beef Shorthorn (bull)	591kg	189ppk	D J Hull & Partners	Y
Limousin x	620kg	184ppk	D J Hull & Partners	Y
Simmental	640kg	179ppk	D J Hull & Partners	Y



SHEEP:2359 FORWARD

SPRING LAMBS:1896

FORWARD SQQ 270P/KG AVG £115

Seemingly lambs coming better in the heat and a nice yarding of quality saw just shy of 1900 meet the trade of the day when posting an SQQ of 270p/kg by far the days top call. In truth this week all buyers fit to buy and aided by a much improved yarding of sheep throughout. Best end lambs met a nice enquiry but general Export standard and middleweights the order of the day. The leader boards dominated today by Lamb grader extraordinaire M J Woodward. Woodys first draw of the year saw his 64 avg 284p/kg and £125. Top today 318p/kg at 39kg from Woody with Dabba Mitchell Beltex to 312p/kg at 38.5kg and Doody Livestock 39kg at 308p/kg. Today 14 pens selling over 300p/kg. Heavies very well chased throughout topping at 312p/kg for 50kg from R & B Smith with Woody 46kg to 291p/kg and R & B Smith 46kg at 284p/kg with heavies at 49.5kg to 283p/kg. In the Lump a yard that avg over £115 despite a continued wealth of lightweight lambs forward. Export lambs still totting up getting to £130 at 42.5kg and 44kg from MJ Woodward a figure equaled at 44kg from Doody Livestock. R & B Smith saw 45.5kg take £127.50. Heavies chased throughout amid reports of shortage of Supply on the London Markets. The result seeing weight pay with plenty of pens topping £140. Top today a marvellous 50kg Texel from R & B Smith making £156 selling to Humpries of Essex others from the same saw 54kg to £151 and J Boulton 55.5kg to £147. Last man through the ring T Eadon & Sons saw 58kg to £147. Trade very much on the farmers side and have we ever left July in such good shape before?

Auctioneer: Tom Wrench

SPRING LAMBS : UNDER 45.5kg SQQ 270p/kg

Per Kilo			
Beltex x	39.00kg	318ppk	MJ Woodward
Texel x	38.50kg	312ppk	D Mitchell
Texel x	39.00kg	308ppk	Doody Livestock
Beltex x	35.50kg	307ppk	MJ Woodward
Beltex x	42.50kg	306ppk	MJ Woodward

Per HEAD			
Beltex x	42.50kg	£130.00	MJ Woodward
Beltex x	44.00kg	£130.00	MJ Woodward
Texel x	44.00kg	£130.00	Doody Livestock
Texel x	45.50kg	£127.50	R & B Smith
Beltex x	42.00kg	£127.00	MJ Woodward

SPRING LAMBS : OVER 45.5 kg

Per Kilo			
Texel x	50.00kg	312ppk	R & B Smith
Charolais x	46.00kg	291ppk	M J Woodward
Texel x	46.00kg	284ppk	R & B Smith
Texel x	49.50kg	283ppk	R & B Smith
Texel x	47.50kg	281ppk	R & B Smith

Per HEAD			
Texel x	50.00kg	£156.00	R & B Smith
Texel x	54.50kg	£151.00	R & B Smith
Charollais x	55.50kg	£147.00	JA Boulton
Texel x	58.00kg	£147.00	T Eadon & Sons
Texel x	54.00kg	£146.00	R & B Smith

YARDSMAN WANTED

Due to the continued Expansion of RFM, we seek a self-motivated Yardsman to take weekly charge of Sales and preparation of Sales yards.

Working predominantly within the Market the Candidates will be responsible for the smooth running of Sales from setup to the final cleaning and Sale conclusion.

Competence working with Stock is essential together with 'Can do' attitude. The Candidate should be detailed in their approach and able to work on their own initiative.

Starting each week on a Sunday lunch time the position is for a full time person with hours to suit save as for attendance on Sundays and Sale days.

To discuss in confidence please email t.wrench@rugbyfarmersmart.com or Call Richard Ellis on 07973962887

CALVES: 80 FORWARD



Baby Calves : 44 Forward

Good entry of fresh young quality calves forward and with a packed ringside of buyers a perfect recipe for great results which prevailed.

Phil Dyson, Corley topping the day with a 4 week old stonking British Blue Heifer at £425 and was bought by Messrs Ibbotson & Crawley, Sketchley .

Other choice results George Pountney, Griff and his 3 week old Charolais Bull at £420 and bought by David Wilson.

Other results were:-

Charolais Bulls.	to £420
Charolais Hfrs.	to £330
British Blue B.	£195 to £370
British Blue Hfr	£285 to £425
Limousin Bulls.	£165 to £400
Limousin Hfrs.	to £260
Angus Bulls.	£130 to £320
Angus Hfrs.	£150 to £295
Sussex Bulls.	to £285
Red Poll Strs.	£180 to £290
Beef S/Horn H.	to £200
Holstein Bulls.	£35. to £105

Reared Calves : 36 Forward

Good to see this section increasing in numbers and interest.

Another good entry of strong calves from AM Dowler, Ilmington and also Whites of Epwell who also topped this section with a 6 month Blue Steers to £575.

Another highlight was Steph Powell's 6 month old Holstein Steer out of a Blue Cow at £530, who also sold good quality 8/11 month old Hereford Heifers £428 to £460.

Other results :-

British Blue Strs	£450 to £500
British Blue Hrs.	£410 to £575
Limousin Strs.	£380 to £450
Angus Strs.	£290 to £565
Angus Hfrs.	£365 to £445
Hereford Hfrs.	£418 to £460
Red Poll Strs.	£210 to £340
Belted Gall Hfr.	to £240
Holstein Strs.	£220 to £530

Next sale 9th August please phone with entries 07437101163

Auctioneer : Tim Webster

CULL EWES: 440 FORWARD



No one ever knows what the week after the Festival will be. An indication though on Sunday as we liaised with Buyers whom reported empty fridges following the Feast. As a result a late text on Sunday to Vendors calling for numbers. Those that responded witnessed a phenomenal trade throughout for all but the very small and lean. Heavy and fat Ewes absolutely phenomenal albeit no best end heavy Ewes forward. Last man in today JB Elkington saw a top for Beltex x at £179 with others and £175 and £169. NF & K Redfern, Hampton in Arden saw £167. Suffolks as high as we have seen selling to £163 for P Bates others £158 from E J Taylor & Son. Charolais to £162 from Messrs Taylor and a whole wealth of Ewes with weight north of £160. Mules on fire again and today topping out at £139.50 from RAE Wilson and £132.50 for Burman Bros. The majority trading £120 plus. Where we go from here is unknown and will depend on what numbers come forwards this week.

Auctioneer: Tom Wrench

EWES

X Bred	£179	J B Elkington	Charollais x	£162	E J Taylor & Son
X Bred	£175	J B Elkington	Texel x	£160.50	J B Elkington
X Bred	£169	J B Elkington	X Bred	£160	S & J Farming
X Bred	£167	N F & K Redfern	Beltex x	£159.5	C Price
Suffolk x	£163	P Bates	Suffolk x	£158	E J Taylor & Son

STORE LAMBS: 23 FORWARD



A few quality Charolais lambs today from SL Peissel, Banbury £85 to £97.

Other XBreds £68 to £79

Auctioneer: Tim Webster

**FARM SALE SATURDAY 11TH SEPTEMBER
ON BEHALF OF R & AE WALLBANK, SHREWLEY**

**Sale of Dairy, Machinery, Deadstock & Chattels
Also this day entries taken for an Open Collective Sale.
Entry forms for this can be found on our website or call
the office on 02476697731 if you require one posting.**

More information to follow soon



Warwickshire
County Council

gp

GODFREY-PAYTON
CHARTERED SURVEYORS

By Direction of Warwickshire County Council

**TO LET ON 10 YEAR FBT
FROM 1st October 2021**

Highfields Farm, Shrewley, CV35 7BD

Four bed farmhouse with a set of modern and
traditional farm buildings
set in Circa 80 acres of pasture land

Viewing date to be confirmed
Please contact the agents for further information

All enquiries: 01926 492511
Warwick@Godfrey-Payton.co.uk
www.godfrey-payton.co.uk



AUTO GATES LTD

Bridge Farm, Holt Lane, Ashby Magna, LE17 5NJ

Trevor 07498993897/01455 202791

Email: tjautogate@gmail.com

Fitted to new or existing gates, wood or steel automated.

Sliding, swinging or cantilever.

DROVERS WANTED

To work every Monday including bank holidays

Experience with livestock preferred must be able to work as part of a team.

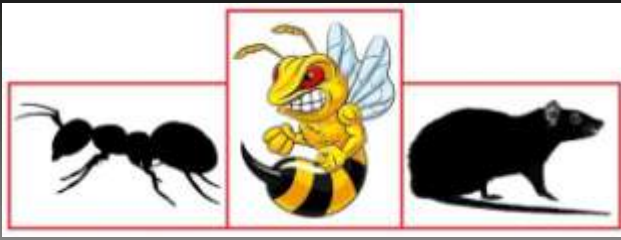
To find out more details please call Sophie on 02476 697731 or email

admin@rugbyfarmersmart.com

TIMING

Prime Cattle 9:45am, Calves (bi-weekly) 11am

Sunday deliveries strictly before 3pm



RDB Pest Control

Reliable | Trustworthy | Fast | Effective
Competitive Prices

Ryan Brunt

07922 091 459

www.rdbpestcontrol.co.uk

Why You Should Choose Us

- ✓ Cater for Red Tractor and Farm Assurance Schemes
- ✓ Wide ranging experience on Farms with existing agricultural customers
- ✓ Member of Warwickshire Young Farmers
- ✓ Fully qualified - Level 2 RSPH in Pest Control
- ✓ Trustworthy and security vetted
- ✓ Prompt, reliable fast response

A selection of sites where I have experience:

Police Sites • Local Airport • Farms • Warehouses • Offices
• Industrial Estates • Food Premises • Private Houses
Country Estates • Building Sites • Local Councils • Schools •
Day Nurseries • Care Homes

UP COMING FARM SALES & AUCTION DATES

On instructions from

Moulton College, College Farm, Moulton, Northants NN3 7QL

To include:

Land Rover Defender 90,
2007 JCB JS130 13 Tonne 360° Excavator,
2011 Merlo Turbo-Farmer P34.7 Plus Telehandler,
Vaderstad Rexius Twin 630 cultivator press,
Monarch 5 stall Horse walker

TOGETHER WITH: 2012 Richard Western SF16HS Sprung Drawbar Silage/Grain Trailer with
Hydraulic Tailgate and Flotation Tyres,
2016 Spearhead Offset Topper,
2005 2.8m Big Stripe Flail Topper with Hydraulic Telescopic offset,
rear roller, front/rear mounted

PLUS: A comprehensive range of grassland and arable machinery,
Sports ground maintenance equipment and Agricultural requisites & Livestock equipment

To be sold by Auction on Saturday 31st July at 10.30AM

Howkins & Harrison are pleased to announce the following upcoming sale:

Saturday 14th August 2021:

Complete Machinery Dispersal Sale On instructions from Brian & Carol Mawby (who are retiring)
Cottage Farm, Crick, near Rugby, Northamptonshire, NN6 7SQ

For information on these or any other sales, please contact our Farm Sales team on the numbers below. We are reviewing all
COVID-19 guidance and all sales will be compliant with the guidance as it stands on the day of the sale.

Please follow any instructions given by our team.



Your local, independent fuel supplier



Heating Oil



Gas Oil
& Diesel



Lubricants
& Additives



Superheat
35



Fuel Tanks



AdBlue®



www.rix.co.uk



01675 419187



HARRIS & CLARKE CHARTERED ACCOUNTANTS

...Specialising In Agriculture...

Our team of staff has many years of experience in dealing with the accountancy and taxation affairs of farmers, landowners and agricultural contractors

For further information or a free no obligation meeting please contact

John Harris

7 Billing Road, Northampton, NN1 5AN
Telephone 01604 622274
www.harrisandclarke.co.uk




Farm insurance, the way it should be

We're a family-run business and pride ourselves on forging long term relationships with our farming and agricultural clients. Covering the Midlands, South West and South East, we deliver an extensive range of farm, agri business and equine policies tailored to you.

www.county-insurance.co.uk/farms

Farm & Equine **01865 844985**

General **01865 842084**

 Follow us **@County_Farm**



Independent Insurance Brokers County Insurance Services Limited. Address and Registered Office: County House, Glyme Court, Langford Lane, Kidlington, Oxon OX5 1LQ. Authorised and regulated by the Financial Conduct Authority (FCA) (FRN: 597267). Company registered in England No. 08411634

An exciting and unique opportunity for a flock manager has become available on a sheep dairy unit in North Warwickshire. This family run business is looking a team member to manage and expand their 350+ dairy sheep enterprise. The successful candidate will have a proven track record in sheep husbandry along with the ability to manage the flock on a day to day basis. As part of the team they will be involved in management decisions and given the opportunity to make their own stamp on the business. Duties will include milking, lambing, care of new-born lambs, feeding and all associated livestock duties. Tractor driving skills for feeding and bedding will be an advantage as well as a full driving licence.

All training for milking and milk hygiene will be given on the job but an ability to learn and attention to detail is essential.

A competitive salary is on offer and pension along with a 2-bedroom cottage with large garden is available on the farm at a nominal rent.

Please call Paul on 07796 611200 for further details

WE COVER SMALL FARMS, LARGE FARMS AND EVERYTHING IN BETWEEN



From sheep farmers to arable farmers.
Flower growers to poultry farmers.

NFU Mutual is proud to insure over 75% of UK farms with our Farm Select insurance. But we want more farms to benefit from great cover and local service. NFU Mutual has introduced Farm Essentials insurance - designed to meet the needs of smaller farms.

As your local agency, we are close by and can provide expert advice and hands-on support when you need it.

Call **Coventry Office** on **02476 444519**
NFU Mutual, 6 Eastwood Business Village,
Harry Weston Road, Binley Business Park,
Coventry, CV3 2UB



NFU Mutual
FARM INSURANCE



J B BARNETT
07506419043

CULTIVATING IDEAS FOR GROWTH

Aspects of contracting Available:

- Mowing
- Tedding
- Raking
- Buck Raking
- Forage Wagon, chopped at 34mm
- FYM Spreading
- Slurry Spreading with Dribble bar
- Ploughing
- Heavy & Light Cultivations
- Cereal Drilling
- All Aspects of Trailer work
- Tractor & Man Available with Lots of experience

Give us a call to get the wheels turning!

FINISHING CATTLE? GROWING CATTLE? FEEDING SHEEP?

BERRYSTOCK FEEDS



Do you want **HIGH PERFORMANCE, COST EFFECTIVE, FULLY ASSURED and COMPLETE FEEDS?** Then contact **BERRYSTOCK FEEDS:**

Tel: 01788 890320 E-Mail: john@berryfieldsfarm.co.uk Web: www.berrystockfeeds.co.uk
 BERRYFIELDS FARM, DAVENTRY, NN11 8NP

T.A.R HIRE

FOR HIRE:

- 10 & 14 TON REAR MUCK SPREADERS
- 12 TON TRAILERS WITH SILAGE SIDES
- ROAD SWEEPER
- FLAT TRAILERS
- GRASS TOPPERS
- CONTRACT MUCK SPREADING SERVICES

CONTACT:

DAVENTRY (ROB) – 07801791212
HINCKLEY (ALAN) - 07802951179



RFM

THE MIDLANDS MART

RUGBYFARMERSMART.COM

FORTHCOMING SALES

FRIDAY 30TH JULY

FIRST ANNUAL BREEDING SHEEP FAIR

**Vendors who are wishing to sell stock
please feel free to contact:**

Tom Wrench - 07774 723758

Gareth Doyle- 07902 330623

Tim Webster- 07437 101163

who will gladly make

A FREE ON FARM VISIT & VALUATION



Follow us on social media:

Facebook & Twitter - @RFMMidlandsMart

Instagram - rugbyfarmersmartltd